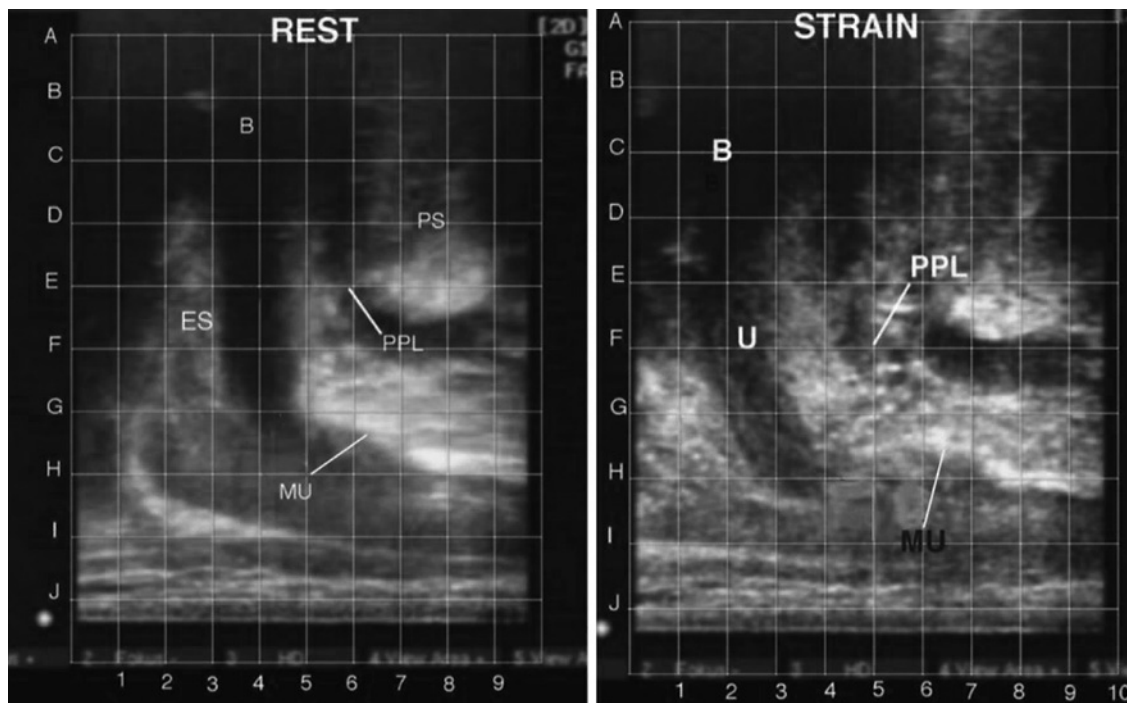


In the article “Retropubic TFS Minisling for Postprostatectomy Male Incontinence: First Report” [Urol Int. 2022;106(3):249–255, DOI: 10.1159/000520629] by Muctar et al., the membranous urethra (MU) at REST in Figure 2 has been identified and labeled incorrectly. The corrected Figure 2 is shown here.



**Fig. 2.** Three reflex muscle forces, backward, downward, and forward close the male urethra as in the female. Left at rest. The lower level of ES (external sphincter) is at G4. MU (membranous urethra) runs between G4 and H7. Right during straining. The lower level of ES is now between H and I and 2.5. PPL has stretched considerably backward, from E6.5 to G4.5, almost double, indicating weakness; MU has moved very considerably upwards relative to the lower end of ES, indicating a forward force applied from behind, exactly as seen in the distal urethra in the female. PS, pubic symphysis; B, bladder.