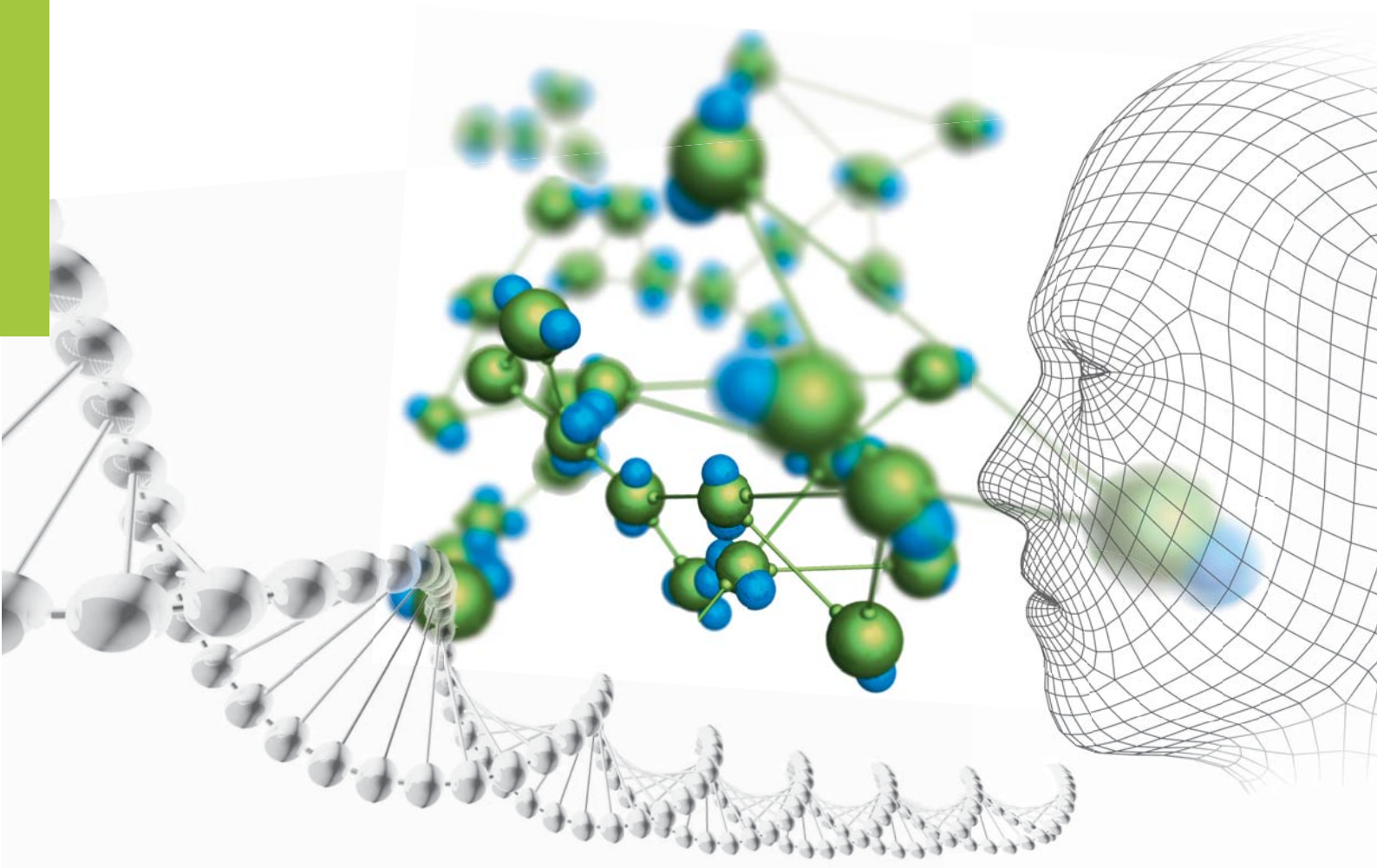


Molecular Syndromology



S. Karger
Medical and Scientific Publishers
Basel · Freiburg · Paris ·
London · New York · Chennai ·
New Delhi · Bangkok · Beijing ·
Shanghai · Tokyo · Kuala Lumpur ·
Singapore · Sydney

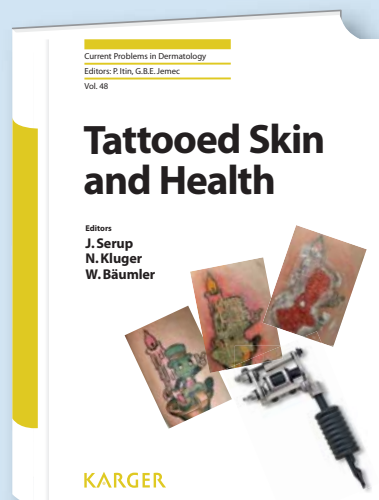
KARGER

Three BMA awards for Karger Publishers

We are delighted to announce that three Karger titles received 'Highly Commended' awards by the British Medical Association in their prestigious 2016 Medical Book Competition:

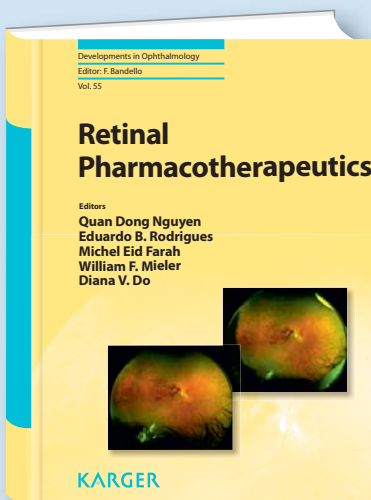


In the category 'Internal Medicine'



Tattooed Skin and Health

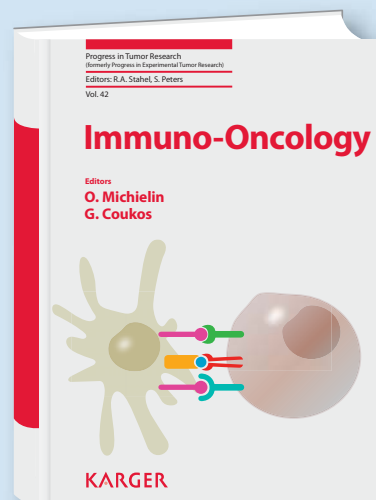
Editors: Serup, J. (Copenhagen); Kluger, N. (Helsinki); Bäumlér, W. (Regensburg)
X + 258 p., 110 fig., 85 in color, 25 tab., hard cover, 2015
ISBN 978-3-318-02776-1
e-ISBN 978-3-318-02777-8
www.karger.com/cupde



Retinal Pharmacotherapeutics

Editors: Nguyen, Q.D. (Omaha, Nebr.); Rodrigues, E.B. (São Paulo); Farah, M.E. (São Paulo); Mieler, W.F. (Chicago, Ill.); Do, D.V. (Omaha, Nebr.)
XVI + 408 p., 83 fig., 71 in color, 33 tab., hard cover, 2016
ISBN 978-3-318-05564-1
e-ISBN 978-3-318-05565-8
www.karger.com/deoph

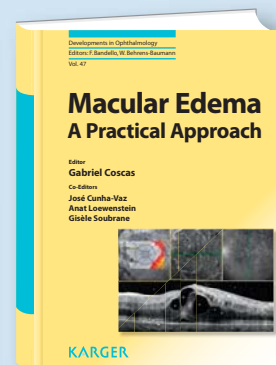
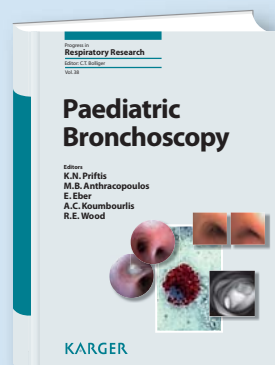
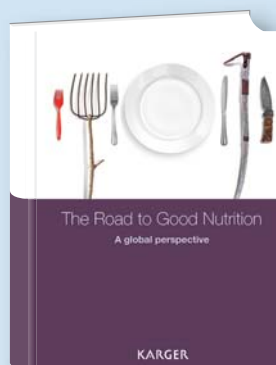
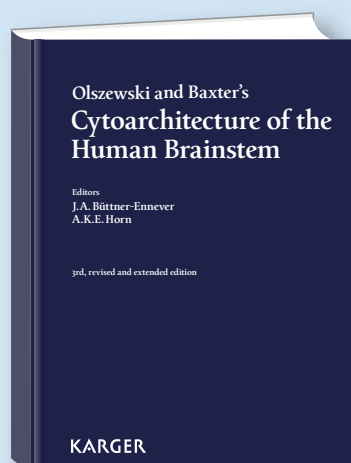
In the category 'Oncology'



Immuno-Oncology

Editors: Michielin, O.; Coukos, G. (Lausanne)
VI + 140 p., 8 fig., 5 in color, 11 tab., hard cover, 2015
ISBN 978-3-318-05589-4
e-ISBN 978-3-318-05590-0
www.karger.com/pritr

Karger titles which received awards in previous BMA Medical Book Competitions



KARGER
www.karger.com

Molecular Syndromology

Founded 2010 by A. Rauch
Continued by M. Schmid (2011–2012)

Editors-in-Chief

Lisa G. Shaffer
CEO, Paw Print Genetics
a division of Genetic Veterinary Sciences, Inc.
850 E Spokane Falls Blvd, Suite 200
Spokane, WA 99202 (USA)
Office: +1 509 483 5950
Mobile: +1 509 723 7879
E-mail: lshaffer@pawprintgenetics.com

Michael Schmid
Department of Human Genetics
University of Würzburg
Biozentrum, Am Hubland
D-97074 Würzburg (Germany)
Tel. (+49) 931 318 4077; Fax (+49) 931 318 4058
E-mail: m.schmid@biozentrum.uni-wuerzburg.de

Associate Editors

Maki Fukami
Department of Molecular Endocrinology,
National Research Institute for Child Health and
Development
2-10-1 Okura, Setagaya
Tokyo 157-8535 (Japan)
Tel. +81 3-5494-7025
Fax +81 3-5494-7026
E-mail: fukami-m@ncchd.go.jp

Geert Mortier
Department of Medical Genetics
Antwerp University Hospital
Prins Boudewijnlaan 43
B-2650 Antwerp (Belgium)
Tel. +32 3 275 9773 (secretary)
Tel. +32 3 275 9766 (direct)
Fax +32 3 275 9723
E-mail: geert.mortier@ua.ac.be

Managing Editors

Tanja Gösswein (address as for M. Schmid)
E-mail: goesswein@biozentrum.uni-wuerzburg.de

Martina Guttenbach (address as for M. Schmid)
E-mail: guttenbach@biozentrum.uni-wuerzburg.de

Karin Schmid (address as for M. Schmid)
E-mail: karin.schmid@uni-wuerzburg.de

Editorial Administrator

Claus Steinlein (address as for M. Schmid)
E-mail: claus.steinlein@biozentrum.uni-wuerzburg.de

Cynthia C. Morton
Harvard Medical School
Brigham and Women's Hospital
New Research Building, Room 160D
77 Avenue Louis Pasteur
Boston, MA 02115 (USA)
Tel. +1 617 525 4535
Fax +1 617 525 4533
E-mail: c.morton@partners.org

Marco Tartaglia
Istituto Superiore di Sanità
Dipartimento di Ematologia, Oncologia e
Medicina Molecolare
Viale Regina Elena, 299
00161 Rome (Italy)
Tel. +39 06 4990 2569; Fax +39 06 4938 7143
E-mail: mtartaglia@iss.it

Editorial Board

Yoko Aoki – *Tohoku University School of Medicine, Sendai, Japan*
Arthur S. Aylsworth – *University of North Carolina at Chapel Hill, Chapel Hill, USA*
Armand Bottani – *Geneva University Hospitals, Geneva, Switzerland*
Han G. Brunner – *Radboud University Nijmegen, Nijmegen, Netherlands*
Christopher Cunniff – *Weill Cornell Medical College, New York, USA*
Hartmut Engels – *University of Bonn, Bonn, Germany*
Carl Ernst – *Douglas Hospital Research Institute, Verdun, Canada*
Peter Farlie – *Royal Children's Hospital, Parkville, Australia*
Livia Garavelli – *Maria Nuova Hospital, Reggio Emilia, Italy*
Judith G. Hall – *Childrens Hospital, Vancouver, Canada*
Raoul Hennekam – *University of Amsterdam, Amsterdam, Netherlands*
Gunnar Houge – *Haukeland University Hospital, Bergen, Norway*
Tomoki Kosho – *Shinshu University School of Medicine, Nagano, Japan*
Seema Lalani – *Texas Childrens Hospital General, Houston, USA*
Johannes R. Lemke – *Universitätsklinikum Leipzig, Leipzig, Germany*
Dimitry M. Niyazov – *Ochsner Health Center for Children, New Orleans, USA*
Martin Poot – *University of Würzburg, Würzburg, Germany*
Stephen Robertson – *University of Otago, Dunedin, New Zealand*
Jill Rosenfeld Mokry – *Baylor College of Medicine, Houston, USA*
Peter Scambler – *University of London, London, UK*
Anne Slavotinek – *University of California, San Francisco, USA*
Ben Solomon – *National Institutes of Health, Bethesda, USA*
Karen Temple – *Princess Anne Hospital, Southampton, UK*
Barbara Vona – *University of Würzburg, Würzburg, Germany*

Molecular Syndromology

Molecular Syndromology

Molecular Syndromology publishes Original Articles, Short Reports, Novel Insights from Clinical Practice (formerly Case Reports) and Reviews on the molecular basis of genetic syndromes, genotype-phenotype correlations, natural history, strategies in disease management and novel therapeutic approaches linked to molecular basis.

Publication sections in conventional issues

Original Articles: High-quality research reports on common and rare genetic syndromes in humans aiming to increase the clinical understanding through molecular insights. Articles dealing with animal model organisms are also considered. Original articles should be fully documented reports of original research that describe full sets of interesting, original experiments in current research. An unstructured Abstract (Maximum 200 words), Introduction, Materials and Methods, Results, and Discussion sections are required. Consideration for publication is based on originality, novelty, scientific soundness, and appropriate analysis. (Maximum 5,000 words of text, 80 references, plus tables/figures).

Reviews: Comprehensive, state-of-the-art papers covering a timely topic by experts in the field. Reviews are usually invited by the Editor but may be unsolicited. Authors are asked to contact the Editor-in-Chief before submission in order to avoid clashes with other pending reviews. All reviews are subject to peer-review. An unstructured abstract of no more than 250 words is required. (Maximum 6,000 words of text, plus tables/figures, references).

Short Reports: These papers must present new findings of sufficient importance and be of potential interest to a large fraction of the readership. They should follow the general arrangement of Original Articles and should represent complete, original studies. (Maximum 3,000 words of text including Abstract, plus a maximum of 2 figures, 1 table and 20 references).

Commentaries: A forum for observations, opinions, and comments outside the realm of conventional scientific papers on topics that will be of interest to the general readership. Original data, illustrations and tables may be included. (Maximum 1,000 words).

Novel Insights from Clinical Practice (formerly Case Reports): The journal only considers case reports that provide significant new insights into a syndromological problem. Submissions can be based around a single case or a number of similar cases. The most important aspect of the presentation is that it should provide a founded molecular insight on a recognized or entirely new genetic syndrome. The novel aspects of the case(s) may be in the phenotype and/or genotype, the presentation, and the investigation. The manuscript should contain an unstructured abstract (Maximum 150 words), introduction, case report and discussion. Boxes containing bullet points on 'Established facts' (what is already known) and 'Novel insights' (new information gained) are required on the first page of the report. These should highlight the novelty of the clinical observation.

Syndrome Conferences, Symposia or Workshops: These detailed reports compile data that have been collected on single syndromes, hereditary diseases and gene-phenotype correlations in humans (maximum 7,000 words, 50 references, plus tables/figures).

Proposals delineating the theme are welcome.

Single topic issues

The journal also publishes a series of themed issues. For these volumes we solicit the assistance of one or more expert investigators to act as Guest Editor(s) in an area that is particularly interesting and/or one in which there is a need for a thorough overview. The Guest Editors invite top

Guidelines for Authors

researchers to contribute original research reports or reviews of a topic that is in their main area of interest. These manuscripts are peer-reviewed in the same way as papers received for conventional issues. Proposals clearly outlining a theme and nominating potential Guest Editor(s) are welcome.

Submission

Only original papers written in English and conforming to the 'Guidelines for Authors' will be considered for publication. They should be submitted using the online website at:

www.karger.com/msy

Should you experience any problems with your online submission, please contact:

Claus Steinlein
Department of Human Genetics
University of Würzburg
Biozentrum, Am Hubland
D-97074 Würzburg (Germany)
Tel. (+49) 931 318 8091; Fax (+49) 931 318 4058
E-mail: claus.steinlein@biozentrum.uni-wuerzburg.de

All manuscripts are subject to editorial and peer review. Names, postal and e-mail addresses of three experts in the appropriate area of research should accompany each manuscript. The referees suggested should not be from the same institution as the author(s) and are expected to have expert knowledge of the subject. The Editors reserve the right to appoint referees different from those suggested by the corresponding author.

The Editors reserve the right to improve style and, if necessary, return the manuscript for rewriting to the authors.

Conflicts of Interest

Any financial (funding, stocks, patents, employment, honoraria, royalties) or non-financial (political, personal, professional) interests/relationships that may be interpreted to have influenced the manuscript must be identified in a 'Conflicts of Interest' statement at the end of the manuscript. If there is no conflict of interest, please state "The authors declare no conflicts of interest."

Ethics

Research must comply with the guidelines for human studies and animal welfare regulations. Manuscripts reporting studies on human subjects should include evidence that the research was ethically conducted in accordance with the World Medical Association Declaration of Helsinki. In particular, authors must state in a 'Statement of Ethics' at the end of the manuscript that subjects (or their parents or guardians) have given their informed written consent and that the study protocol was approved by an appropriate ethics committee. All patients should be identified by numbers or aliases, not by their real names. Authors should also state that animal experimentation was approved by the appropriate institutional review body. Copies of these guidelines and policy statements must be available for review by the editors if necessary.

Conditions

The manuscript must be accompanied by a cover letter stating that all authors have seen and given their approval for submission of the manuscript to *Molecular Syndromology*.

Manuscripts are received with the explicit understanding that they are not under simultaneous consideration by any other publication or have not already been published elsewhere. Submission of an article for publication implies transfer of the copyright from the author to the publisher upon acceptance. Accepted papers become the permanent property of *Molecular Syndromology* and may not be reproduced by any means, in whole or in part, without the written consent of the publisher.

It is the authors' responsibility to obtain permission to reproduce texts, illustrations, tables, etc., from copyrighted sources.

The Editor reserves the right to reject papers based on priorities and space availability in the journal.

Peer-Review Policy

Molecular Syndromology is a peer-reviewed journal. Our aim is to provide authors with fast and constructive feedback regarding their submitted manuscript. The Editors-in-Chief and international editorial board ensure a thorough and fair peer review and the highest scientific publishing standards. The Editors-in-Chief are responsible to maintain high-quality peer review of papers submitted to the journal.

Arrangement

Title page: The first page should contain the title of the article along with an appropriate running title, the full names of the authors and their affiliations. The full postal address, telephone and fax numbers, as well as the e-mail address of the corresponding author must also be included.

Abstracts should be provided for all Original Articles, Reviews and Short Reports.

Figures: Digital illustrations should be sharp with good contrast and color rendition. Resolution for all graphics should be at least 300 dpi. We request that all illustrations be in a common format such as .jpg (.jpeg .jpe), .tif (.tiff), .eps or .ppt.

Tables must be in Word format. Please use MS WORD Table > Insert > Table command from the menu bar to make tables.

Literature Cited

References should be quoted in the text as follows: single author: Jones (1999); two authors: Jones and Smith (2000); more than two authors: Jones et al. (2001). The reference list should be arranged alphabetically according to the first author's surname. Titles should be given in full. Papers published in electronic format exclusively should list authors, title and journal as above followed by the journal's URL, e.g.: Chinnappan D, Zhang Y, Ravid K: AIM-1 Transgenic mice with a curly tail phenotype and its chromosome location. *Cytogenet Genome Res* 98:231A (2002) at: <http://karger.com/doi/10.1159/000069799>.

Book references must include the book title, editor(s), publisher, and city of publication. Recent issues of the Journal should be carefully consulted for reference list style. Agreement between text citations and the reference list should be checked carefully, and the latter checked for accuracy. If many errors are found, the manuscript will be returned for corrections which may cause considerable publication delay.

Gene Symbols

Human gene symbols: Only official gene symbols assigned by the HUGO Gene Nomenclature Committee (HGNC) are accepted. Authors must obtain or verify the official gene symbol of the gene(s) mapped and indicate that they have done so in the manuscript submitted. This can be accomplished for human genes by contacting

HUGO Gene Nomenclature Committee (HGNC)
European Bioinformatics Institute (EMBL-EBI)
Wellcome Trust Genome Campus
Hinxton, Cambridgeshire, CB10 1SA, UK
E-Mail: hgnc@genenames.org
Website: www.genenames.org

Guidelines set forth by the HUGO Gene Nomenclature Committee are available at www.genenames.org/guidelines.html

Molecular Syndromology

New symbols and names for genes can be requested electronically through the online gene symbol request form at http://www.genenames.org/cgi-bin/hgnc_request.pl

Animal gene symbols: Authors submitting material on mouse and rat genetics should obtain correct genetic nomenclature before publication.

Lois Maltais
MGD Nomenclature Coordinator
The Jackson Laboratory
600 Main Street
Bar Harbor, ME 04609, USA
Tel. +1 207 288 6429
Fax +1 207 288 6132
E-Mail: nomen@informatics.jax.org
MGD home page: www.informatics.jax.org

Guidelines set forth by the International Committee on Standardized Genetic Nomenclature for Mice are available at www.informatics.jax.org/mgihome/nomen/table.shtml; New symbols and names for genes can be requested electronically through the on-line symbol registry form at www.informatics.jax.org/mgihome/nomen.

Gene mapping data for the mouse should also be submitted to the Mouse Genome Database (MGD) following the guidelines at www.informatics.jax.org/mgihome/submissions/submit.shtml. The assigned MGD accession numbers should be included in the manuscript for publication. Assistance with submissions can be obtained by sending an e-mail to: submissions@informatics.jax.org

Electronic Proofs

Unless indicated otherwise, proofs are e-mailed to the corresponding author.

Color Charges

There are no charges for illustrations and color reproductions.

Page Charges

No page charges are levied.

Supplementary Material

Multimedia files and other supplementary files, directly relevant but not essential to the conclusions of a paper, enhance the online version of a publication and increase its visibility on the web. These files will undergo editorial review. The Editors reserve the right to limit the scope and length of the supplementary material. Multimedia and

supplementary material should meet production quality standards for publication without the need for any modification or editing. Files should not exceed 10 MB in size. Figures and tables need to have titles and legends, and all files should be supplied separately and labeled clearly. All supplementary material should be referred to in the main text. A DOI number will be assigned to supplementary material and it will be hosted online at <https://karger.figshare.com> under a CC BY license. Authors will be charged a processing fee of CHF 250.00 for supplementary material.

Self-Archiving/Green Open Access

Karger permits authors to archive their pre-prints (i.e. pre-peer review) or post-prints (i.e. accepted manuscript after peer review but before production) on their personal or their institution's internal website. In addition, authors may post their accepted manuscripts in public Open Access repositories and scientific networks (e.g. ResearchGate or Mendeley) no earlier than 12 months following publication of the final version of their article. For all self-archiving, the posted manuscripts must:

- Be used for noncommercial purposes only
- Be linked to the final version on www.karger.com
- Include the following statement:

'This is the peer-reviewed but unedited manuscript version of the following article: [insert full citation, e.g. Cytogenet Genome Res 2014;142:227–238 (DOI: 10.1159/000361001)]. The final, published version is available at [http://www.karger.com/?doi=\[insert DOI number\]](http://www.karger.com/?doi=[insert DOI number]).'

It is the author's responsibility to fulfill these requirements.

For papers published online first with a DOI number only, full citation details must be added as soon as the paper is published in its final version. This is important to ensure that citations can be credited to the article.

Manuscripts to be archived in PubMed Central due to funding requirements will be submitted by Karger on the author's behalf [see Funding Organizations (NIH etc.)].

For self-archiving Author's Choice™ (Gold Open Access) articles, see Author's Choice™.

Author's Choice™

Karger's Author's Choice™ service broadens the reach of your article and gives all users worldwide free and full

access for reading, downloading and printing at www.karger.com. The option is available for a one-time fee of CHF 3,000.00, which is a permissible cost in grant allocation. More information can be found at www.karger.com/authors_choice.

The final, published version of the article may be posted at any time and in any repository or on other websites, in accordance with the relevant Creative Commons license. Reposted Open Access articles must:

- Follow the terms of the relevant Creative Commons license
- Be linked to the final version on www.karger.com
- Include the following statement:

'The final, published version of this article is available at [http://www.karger.com/?doi=\[insert DOI number\]](http://www.karger.com/?doi=[insert DOI number]).'

It is the author's responsibility to fulfill these requirements.

For papers published online first with a DOI number only, full citation details must be added as soon as the paper is published in its final version. This is important to ensure that citations can be credited to the article.

Funding Organizations (NIH etc.)

The U.S. National Institutes of Health (NIH) Public Access Policy mandates that accepted, peer-reviewed manuscripts are archived in its digital database, PubMed Central (PMC), within 12 months of the official publication date. As a service to authors, Karger submits NIH-funded articles to PMC on behalf of the authors immediately upon publication. The NIH assigns a PMCID within approximately 1 month and the manuscript will appear in PMC after a 12-month embargo. For authors making their paper Open Access through Author's Choice™, the embargo will be overridden, thereby accelerating the accessibility of the article. Karger also complies with other funders' requirements (including Wellcome Trust and RCUK) for submission to PMC. Authors should include information on their grants in the Acknowledgements section of their papers.

Reprints

Reprints are available against payment. Order forms listing prices are provided with the proofs. If no reprints are desired this should be indicated on the form. Orders submitted after the issue has gone to press are subject to higher prices.

Molecular Syndromology

ISSN Print Edition: 1661-8769
ISSN Online Edition: 1661-8777

Journal Homepage: www.karger.com/msy

Publication Data: *Molecular Syndromology*.
Volume 7 with 6 issues appears in 2016.

Copyright: © 2016 S. Karger AG, Basel (Switzerland). All rights reserved. No part of this publication may be translated into other languages, reproduced or utilized in any form or by any means, electronic or mechanical, including photocopying, recording, microcopying, or by any information storage and retrieval system, without permission in writing from the publisher or, in the case of photocopying, direct payment of a specified fee to the Copyright Clearance Center.

Disclaimer: The statements, opinions and data contained in this publication are solely those of the individual authors and contributors and not of the publisher and the editor(s). The appearance of advertisements in the journal is not a warranty, endorsement, or approval of the products or services advertised or of their effectiveness, quality or safety. The publisher and the editor(s) disclaim responsibility for any injury to persons or property resulting from any ideas, methods, instructions or products referred to in the content or advertisements.

General Information

Subscription Rates: Subscriptions run for a full calendar year. Prices are given per year.

Personal subscription:

Print or Online	Print+Online combined
CHF 409.00	CHF 459.00
EUR 365.00	EUR 405.00
USD 440.00	USD 494.00

postage and handling (added to print and print+online)
CHF 45.60 Europe, CHF 67.20 Overseas
EUR 40.80
USD 62.40

Institutional subscription:

Print or Online	Print+Online combined
CHF 1635.00	CHF 1880.00
EUR 1460.00	EUR 1679.00
USD 1758.00	USD 2022.00

postage and handling (added to print and print+online)
CHF 57.00 Europe, CHF 84.00 Overseas
EUR 51.00
USD 78.00

Back Volumes and Single Issues: Information on availability and prices of single print issues and print or electronic back volumes can be obtained from Customer Service at service@karger.com.

Bibliographic Indices: This journal is regularly listed in Index Medicus/MEDLINE, Science Citation Index, EMBASE/Excerpta Medica, IMEMR (WHO) and Reference Update.

Photocopying: This journal has been registered with the Copyright Clearance Center (CCC), as indicated by the code appearing on the first page of each article. For readers in the US, this code signals consent for copying of articles for personal or internal use, or for the personal or internal use of specific clients, provided that the stated fee is paid per copy directly to Copyright Clearance Center Inc.
222 Rosewood Drive
Danvers, MA 01923 (USA)

A copy of the first page of the article must accompany payment. Consent does not extend to copying for general distribution, for promotion, for creating new works, or for resale. In these cases, specific written permission must be obtained from the copyright owner, S. Karger AG, P.O. Box CH-4009 Basel (Switzerland).

Subscription Orders:

Orders can be placed at agencies, bookstores, directly with the Publisher

S. Karger AG

Medical and Scientific Publishers
Allschwilerstrasse 10
CH-4009 Basel
Switzerland

t: +41 61 306 11 11
f: +41 61 306 12 34
e: karger@karger.com
w: www.karger.com

(for courier services only:
Allschwilerstrasse 10
CH-4055 Basel)

or further Karger offices
or representatives:

Germany
S. Karger GmbH
Postfach
79095 Freiburg
Deutschland
(Hausadresse: Wilhelmstrasse 20A,
79098 Freiburg)
t: +49 761 45 20 70
f: +49 761 45 20 714
e: information@karger.de
w: www.karger.de

Japan
Karger Japan, Inc.
Shiba Daimon Asahi Bldg. 2F
1-2-23 Shiba Daimon
Minato-ku
Tokyo 105-0012
Japan
t: +81 3 6435 6242
f: +81 3 6435 6244
e: publisher@karger.jp
w: www.karger.jp

USA
S. Karger Publishers, Inc.
26 West Avon Road
P.O. Box 529
Unionville, CT 06085
USA
Toll free: +1 800 828 5479
t: +1 860 675 7834
f: +1 860 675 7302
e: kargerusa@karger.com

France
Enter & Read
Albertine Luginbuhl
23, rue du Départ, boîte 37
75014 Paris
France
t: +33 (0) 6 81 04 76 85
e: albertineluginbuhl@orange.fr

South East Asia, China and Taiwan
Karger Regional Office (Malaysia)
Level 28-03-03A, PJ Exchange
No. 16A, Persiaran Barat
46050 Petaling Jaya
Selangor Darul Ehsan
Malaysia
t: +60 3 7962 0158
f: +60 3 7962 0001
e: service@karger.cn; r.chew@karger.cn

Karger China

51F Raffles City Centre
268 Xi Zang Middle Road
Huang Pu District
Shanghai 200001
P.R. China
t: +86 21 2312 7673
f: +86 21 2312 7777
e: service@karger.cn
r.chew@karger.cn
w: www.karger.cn

India, Bangladesh, Sri Lanka Karger India

Plot No. 17, Yusuf Sarai Market
B.L. Glass Building, 2nd Floor
Sri Aurobindo Marg
New Delhi 110 016
India
t: +91 11 46029 633
f: +91 11 46029 634
e: +91 98 91052 128
c: r.kumar@kargerindia.com
w: www.karger.com

Change of Address:

Both old and new address should be sent
to the subscription source.

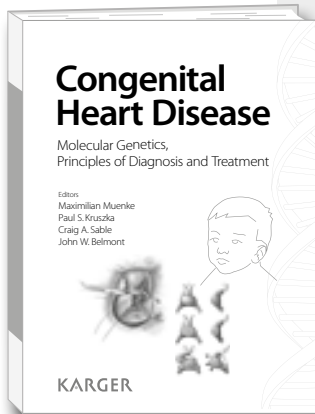
KARGER

© 2016 S. Karger AG, Basel

E-Mail karger@karger.com
www.karger.com

The Journal Home Page is available at:
www.karger.com/msy

Cutting-edge advances in the embryology, epidemiology, genetics, diagnosis, imaging, and therapy of congenital heart disease



Congenital Heart Disease

Molecular Genetics, Principles of Diagnosis and Treatment

Editors
Maximilian Muenke
Paul S. Kruszka
Craig A. Sable
John W. Belmont

Congenital Heart Disease

Molecular Genetics, Principles of Diagnosis and Treatment
Editors: Muenke, M.; Kruszka, P.S. (Bethesda, Md.); Sable, C.A. (Washington, D.C.); Belmont, J.W. (Houston, Tex.)
XIV + 326 p., 93 fig., 49 in color, 43 tab., 2015
CHF 194.00 / EUR 181.00 / USD 228.00 (hard cover)
CHF 233.00 / EUR 217.00 / USD 274.00 (online)
Online version for institutional purchase
Prices subject to change, VAT not included
EUR price for eurozone countries, USD price for USA and Latin America only
ISBN 978-3-318-03003-7 (hard cover)
e-ISBN 978-3-318-03004-4



This cutting-edge book encompasses the latest advances in the embryology, epidemiology, genetics, diagnosis, imaging, and therapy of congenital heart disease. The international cast of authors are leaders in their fields and have combined their talents to produce a unique and expert perspective on congenital heart disease. The work is of interest to pediatricians, internal medicine specialists, medical geneticists, both pediatric and adult cardiologists, embryologists, imaging physicians, and cardiac surgeons. This book arrives at a very exciting time as new genetic, imaging, and therapeutic developments are changing the field of congenital heart disease. It takes the reader on a journey that begins with a historical overview of congenital cardiovascular anomalies and ends with developments in stem cell and tissue engineering. In between these chapters are destinations that include cardiac embryogenesis, epidemiology, genetic syndromes associated with cardiovascular anomalies, single gene disorders, cardiac imaging, surgical and interventional therapies, and ethical considerations. *Congenital Heart Disease* is an invaluable reference. In short, it provides important pearls of wisdom to create a comprehensive reference for all physicians involved with congenital heart disease.

Contents

- Preface: **Muenke, M.; Kruszka, P.S.; Sable, C.A.; Belmont, J.W.**
- Foreword: **Noonan, J.A.**

Overview

- Congenital Cardiovascular Anomalies: A Historical Overview: **Moller, J.H.**
- Normal Development of the Heart: **Sylva, M.; Moorman, A.F.M.**

Epidemiology

- Epidemiology and Prevention of Congenital Heart Defects: **Botto, L.D.**
- Congenital Epidemiology and Management of Congenital Heart Defects in a Developing Country: **Ekure, E.N.; Adeyemo, A.A.**
- Maternal Nongenetic Risk Factors for Congenital Heart Defects: **Riehle-Colarusso, T.J.; Patel, S.S.**
- Adults with Congenital Heart Disease: **Niwa, K.**

Chromosomal Disorders

- Down Syndrome: **Kruszka, P.S.**
- Congenital Cardiovascular Defects in Monosomy X or Turner Syndrome: **Bondy, C.**
- The 22q11.2 Deletion Syndrome: **Goldmuntz, E.**
- Other Genomic Disorders Causing Congenital Cardiovascular Malformations: **Lalani, S.R.**

Single Gene Disorders

- Noonan Syndrome and Other RAS/MAPK Pathway Syndromes: **Gelb, B.D.; Roberts, A.E.; Tartaglia, M.**
- The Holt-Oram Syndrome and Other Transcription Factor-Related Heart Diseases: **Borlak, J.; Ciribilli, Y.**
- CHARGE Syndrome: **Corsten-Janssen, N.; van Ravenswaaij-Arts, C.M.A.**
- Alagille Syndrome: **Lin, H.C.; Falsey, A.; Krantz, I.; Spinner, N.**
- Heterotaxy: **Lo, C.; Li, Y.; Yagi, H.; Gabriel, G.; Klana, N.; Lemke, K.; Leatherbury, L.**
- Molecular Genetics of Isolated Cardiovascular Malformations: **Lee, T.M.; Chung, W.K.**
- Other Single-Gene Disorders Causing Congenital Heart Disease: **Russell, M.W.; Hannibal, M.**

Arrhythmias, Cardiomyopathies, and Connective Tissue Disorders

- Genetic Arrhythmias (Channelopathies): **Mazzanti, A.; Ng, K.; Priori, S.G.**
- Genetic Cardiomyopathies: **Towbin, J.A.**
- Congenital Thoracic Aortic Aneurysm: **Lindsay, M.E.; Dietz, H.C.**

Evaluation

- The Genetic Workup for Congenital Structural Heart Disease: From Clinical to Genetic Evaluation: **Kruszka, P.S.; Sable, C.A.; Belmont, J.W.; Muenke, M.**
- Imaging of Congenital Heart Defects for the Noncardiologist: **Sable, C.A.**
- Prenatal Evaluation of Congenital Heart Defects and Fetal Intervention: **Weinberg, J.G.; Krishnan, A.**

Treatment

- Surgical Management: **Costello, J.P.; Jonas, R.A.; Nath, D.S.**
- Interventional Cardiology: **Morgan, G.J.; Qureshi, S.A.**
- Ethical Considerations in Congenital Heart Disease: **Boss, R.D.; Shapiro, M.C.**
- The Future of Therapeutics: Stem Cells, Tissue Plasticity, and Tissue Engineering: **Tao, G.; Martin, J.F.**

Dear Librarian

I have reviewed this publication and would like to recommend it for our library.

Recommended by:

Department:

Date:

Signature:

Orders may be placed with any bookshop, subscription agency, directly with the publisher or through a Karger distributor.

The easiest way to order: www.karger.com/congenital-heart

Karger – Medical and Scientific Publishers
CH-4009 Basel, Switzerland
orders@karger.com, f: +41 61 306 12 34
www.karger.com

KARGER

Contents

[See the journal website for contents](#)

*A leading journal on human, animal and plant
chromosomes and genomes*

Cytogenetic and Genome Research

Editor-in-Chief

M. Schmid,
Würzburg

Executive Editors

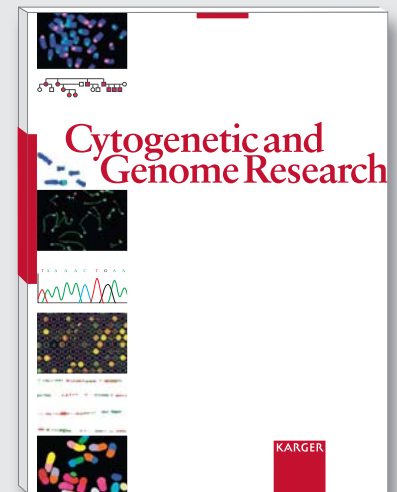
L.A. Cannizzaro,
Bronx, N.Y.
T. Haaf, Würzburg

Managing Editors

T. Gößwein, Würzburg
M. Guttenbach,
Würzburg
K. Schmid, Würzburg

Associate Editors

R. D. Burnside,
Research Triangle Park
A. Geurts Van Kessel,
Nijmegen
A. Houben,
Gatersleben
I. Nanda, Würzburg
O. Riess, Tübingen
J. Smith, Roslin



During the last decades, *Cytogenetic and Genome Research* has been the leading forum for original reports and reviews in human and animal cytogenetics, including molecular, clinical and comparative cytogenetics. In recent years, most of its papers have centered on genome research, including gene cloning and sequencing, gene mapping, gene regulation and expression, cancer genetics, comparative genetics, gene linkage and related areas. The journal also publishes key papers on chromosome aberrations in somatic, meiotic and malignant cells. Its scope has expanded to include studies on invertebrate and plant cytogenetics and genomics. Also featured are recent international reports on human and animal chromosome nomenclature and reports on gene mapping in domestic animals. In addition to regular issues, the journal has been publishing since 2002 a series of topical issues on a broad variety of themes from cytogenetic and genome research.

Cytogenetic and Genome Research

Founded: 1962

Category: Basic Research

Field of Interest: Genetics

Listed in bibliographic services, including:

*PubMed/MEDLINE, Web of Science, Google Scholar,
Scopus, Embase*

2017: Volumes 151, 152, 153

4 issues per volume

Language: English

ISSN 1424-8581

e-ISSN 1424-859X

Impact Factor: 1.638
5-Year Impact Factor: 1.594

Selected contributions

- 22q11.21 Deletion Syndromes: A Review of Proximal, Central, and Distal Deletions and Their Associated Features: **Burnside, R.D.** (Research Triangle Park, N.C.)
- Transposons, Genome Size, and Evolutionary Insights in Animals: **Canapa, A.; Barucca, M.; Biscotti, M.A.; Forconi, M.; Olmo, E.** (Ancona)
- Chromosomal Abnormalities in Embryonic and Somatic Stem Cells: **Rebuzzini, P.** (Pavia); **Zuccotti, M.** (Parma); **Redi, C.A.; Garagna, S.** (Pavia)
- Condensin in Chromatid Cohesion and Segregation: **Uchiyama, S.** (Osaka/Okazaki); **Fukui, K.** (Osaka)
- Small Supernumerary Marker Chromosomes in Human Infertility: **Armanet, N.; Tosca, L.; Brisset, S.** (Clamart/Le Kremlin-Bicêtre); **Liehr, T.** (Jena); **Tachdjian, G.** (Clamart/Le Kremlin-Bicêtre)
- TET Family of Dioxygenases: Crucial Roles and Underlying Mechanisms: **Li, D.; Guo, B.; Wu, H.; Tan, L.; Lu, Q.** (Changsha)
- Polyploidy in Animals: Effects of Gene Expression on Sex Determination, Evolution and Ecology: **Wertheim, B.; Beukeboom, L.W.; van de Zande, L.** (Groningen)
- Parallel Universes for Models of X Chromosome Dosage Compensation in *Drosophila*: A Review: **Birchler, J.A.** (Columbia, Mo.)

More information at
www.karger.com/cgr



KARGER

Molecular Syndromology

Editorial – Late Breaking Chromosomes

249 **When Recessive Genes Mutate to Dominant Gene Action**

Poot, M. (Würzburg)

Syndrome Conferences, Symposia or Workshops

251 **Changing Paradigms in Down Syndrome: The First International Conference of the Trisomy 21 Research Society**

Delabar, J.-M.; Allinquant, B. (Paris); Bianchi, D. (Medford, Mass.); Blumenthal, T. (Boulder, Colo.); Dekker, A. (Groningen); Edgin, J. (Tucson, Ariz.); O'Bryan, J. (Chicago, Ill.); Dierssen, M. (Barcelona); Potier, M.-C. (Paris); Wiseman, F. (London); Guedj, F. (Medford, Mass.); Créau, N. (Paris); Reeves, R. (Baltimore, Md.); Gardiner, K. (Aurora, Colo.); Busciglio, J. (Irvine, Calif.)

Review Articles

262 **Disorders of Transcriptional Regulation: An Emerging Category of Multiple Malformation Syndromes**

Izumi, K. (Philadelphia, Pa.)

274 **The Family of Crumbs Genes and Human Disease**

Slavotinek, A.M. (San Francisco, Calif.)

Original Article

282 **PARK2 Microduplication: Clinical and Molecular Characterization of a Further Case and Review of the Literature**

Palumbo, O.; Palumbo, P. (San Giovanni Rotondo); Leone, M.P. (San Giovanni Rotondo/Bari); Stallone, R.; Palladino, T. (San Giovanni Rotondo); Vendemiale, M.; Palladino, S.; Papadia, F. (Bari); Carella, M. (San Giovanni Rotondo); Fischetto, R. (Bari)

Short Report

287 **Distal 7q11.23 Duplication, an Emerging Microduplication Syndrome: A Case Report and Further Characterisation**

Faundes, V.; Santa María, L.; Morales, P.; Curotto, B.; Parraguez, M.M. (Santiago)

Novel Insights from Clinical Practice

292 **Language Impairment Resulting from a de novo Deletion of 7q32.1q33**

Jiménez-Romero, M.S.; Barcos-Martínez, M.; Espejo-Portero, I. (Córdoba); Benítez-Burraco, A. (Huelva)